

## How to Download / Upload the AU5000 system configuration.

**IMPORTANT:** This product is part of a life-safety system.

**Please Note:** Regular inspection and servicing must be performed by a competent person who has specialist knowledge of Fire Detection and Alarm Systems (FDAS), current and relevant training and experience, access to appropriate spare parts, and sufficient information about the system. (Reference: AS1851-2012 Section .6)

**This document supersedes all previous versions. Please ensure any outdated hard or soft copies are securely discarded. To confirm this is the latest and most applicable version for your task, please contact Fusion Fire Systems directly.**

Issue Date: June 2025

Version: 0.1

1. Put the panel into commissioning mode (Level -3)  
Menu → Tool → Commission → press '7654' (default password) followed by ✓ button.

**Note:** If the panel is a part of network system, it will be isolated from the network while it is in commissioning mode. The panel must always be returned to level 2 (or level 1) to give normal fire coverage.

2. Open the AxisAu config Tool.



3. Go to File → New



4. Click USB icon for communications.



**Note:** Once communications are successful, it will show below.

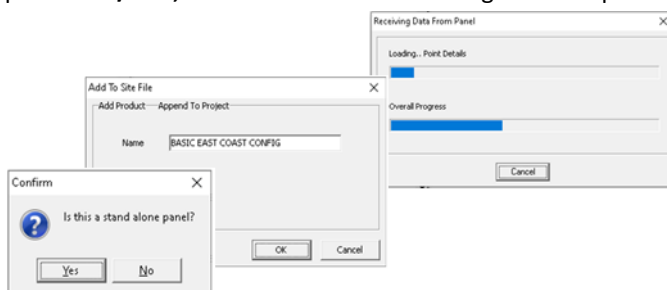


5. Go to File → Transfer data from panel to PC.



6. A window will pop up, confirming the Panel Type and Name.

Once press "Yes/OK", it will start to transfer config from the panel to the PC.



7. On completion of data transfer, save the config onto the PC



### How to upload a config from PC to Panel

1. While the panel is in commissioning mode, put the panel into PC program mode.

Menu → Next Menu → PC-PROGRAM

**Note:** The panel display will show “Waiting for PC”

2. Open the config file using AxisAU config software.
3. Click the USB icon for communications.

**Note:** Once communications are successful, the Panel display will show “PC CONNECTED”.

4. Click the Tablet icon to Transfer config data from PC to Panel



**Note:** AxisAu config tool will check the design of the config before sending data to the panel.

5. Once the data transfer is completed, Disconnect communications by pressing USB(with X mark) icon.



6. Put the panel back into Level 2 mode.

ESC (x2) → EXIT → press '7654' (default password)

